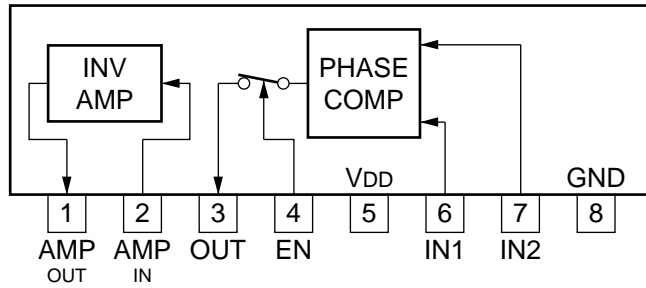


### N-MOS PHASE COMPARATOR WITH INVERSION AMPLIFIER

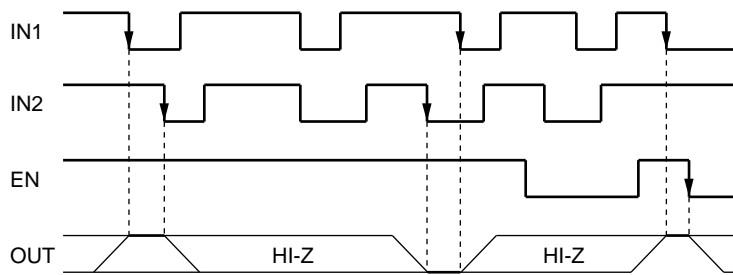
—PRINTED SIDE VIEW—



EN	OUT
1	ACTIVE
0	HIGH IMPEDANCE

1 ; HIGH LEVEL  
0 ; LOW LEVEL

#### TIMING CHART



HI-Z ; HI-IMPEDANCE